

SunStay

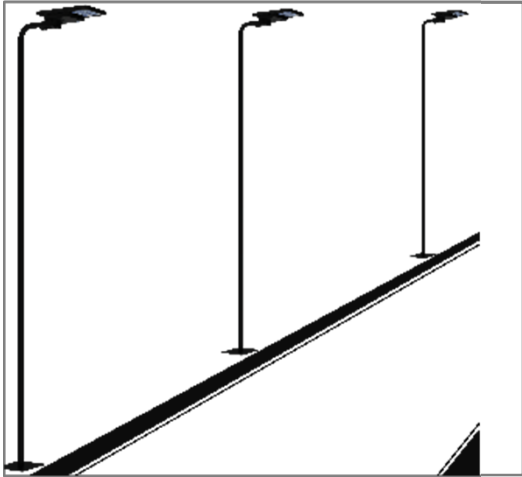
All in one integrated Solar Streetlight



innovation  you

PHILIPS

Application Areas



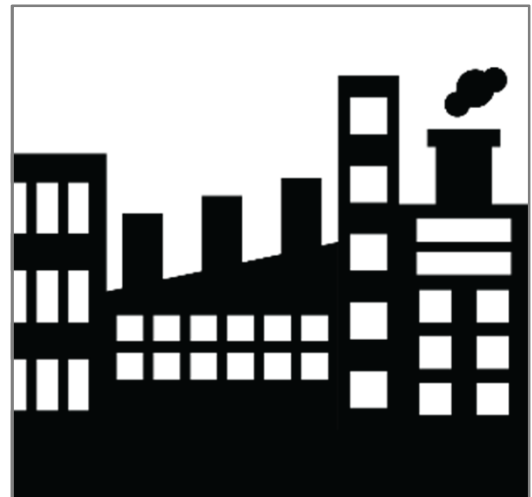
Class B1 & B2
Category roads



Rural areas villages



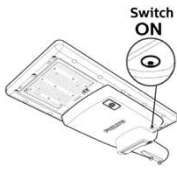
Parks



Industries, office,
schools, hospitals

Recommended installation height is 5 meter, for its best performance

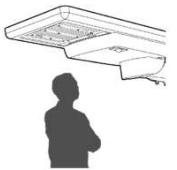
Features



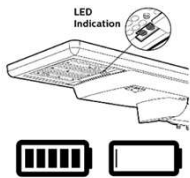
- Highest ever luminous efficacy of more than 175lm/W; more illumination in lesser power consumption



- Solar panel senses darkness and switches on luminaire during night automatically



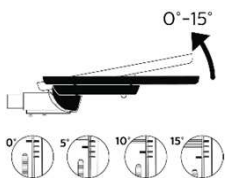
- PIR sensor detects human body movement to change lighting levels



- Smart self diagnosis feature with LED Indicators along with Battery charging & Deep discharging cut-off Indications



- Highly safe & Advanced long life maintenance free LiFePO4 battery



- Adjust solar Panel facing to sun trajectory to capture optimum radiation (0/5/10/15 Deg tilt angle); Smart pole mount markings, eases angle adjustment



- Post Top & side mounting option i.e. Horizontal & Vertical Pole Mounting options

Autonomy/ Battery Back-Up - 24 Hours with dimming profile & PIR Sensor

Dimming Profile From Dusk –

- First 5 hrs. sensor enabled
- Next 5 hrs. sensor is disabled and light output is fixed at 30% brightness (70% dim)
- Next till dawn Sensor Enabled

Technical Specifications

Description	Brief
System wattage	12V DC, 11Watts (+/-10%)
System Lumen Output	>2000lm, Street Light distribution
System Efficacy	min 175lm/Watts
Solar Panel Module Capacity	12V, 28Watts Peak
Solar Cell Efficiency	min 12% , Polycrystalline
Battery Chemistry	Lithium Ferro Phosphate, LiFePo4
Battery Capacity	>170Wh
Charging Electronics	Integrated MPPT charger with Driver
Charger Efficiency	> 90%
Driver Efficiency	> 90%
LED Burning Hours	> 50,000 hrs. @ L70
IP Rating	IP65
Housing	Aluminum Pressure Die Cast
Front Cover	UV stabilized Polycarbonate cover
Color Temperature	Typical 5700K
CRI of Illumination	>70
Motion sensor	In-built with PIR Sensor
Switch for ON-Off	Provided
Charging & Discharging LED Indicator	Provided
Mounting	post Top & side mounting option i.e Horizontal & Vertical Pole Mounting options
Adjustable Tilt Angle [Deg]	0 - 15 degree adjustable, Arm & Pole Mount
Outer Mounting Diameter in mm	48 - 60 mm
Operating Temp Range for Light Engine	0 to +35 ⁰ C
Operating Humidity	Up to 95%
Recommended Pole Height	5.0 Meters above ground
Warranty	3 yrs. against manufacturing defects

Standards Compliance

- IEC60598-2-3 : Safety of luminaire for road and street lighting
- IEC 62109-1 : Safety of power converters used in solar panel equipment
- EN 50530 : Performance evaluation of maximum power point tracking (MPPT)
- IEC 61547 : EMC immunity requirements
- CISPR 15 : Radio disturbance characteristics
- IEC 62133, IEC 61960 & UL1642 : Safety of lithium ferro phosphate battery
- IEC 61730-1,2 & IEC 61215 : Safety of solar panel module

Ordering Details

12NC	Item Description	Qty. per Box	Product Weight	Gross Weight
919515812389	BRP710 LED20 CW MR S1 12V LFP AIO Solar Equip IN	1	10.0 Kgs	13.50kg