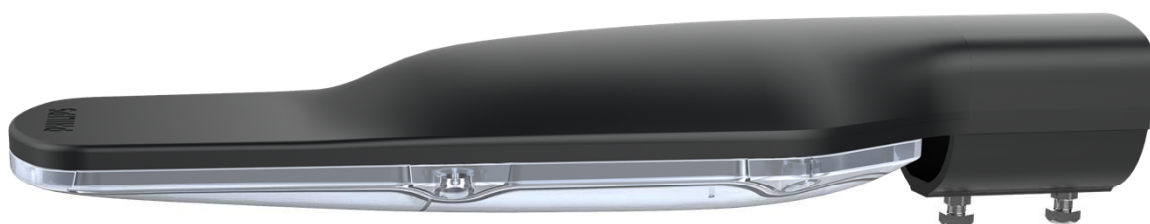




SmartBright Street (BRP062)

Reliable Savings, lasting brightness



SmartBright Street (BRP062)



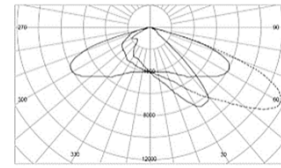
Features & Benefits

- **Best in class energy-efficiency** : Energy savings up to 60% compared to conventional lighting solutions; 1:1 replacement for 1x150W SON street lights
- **Robust, Reliable and Safe:**
 - Toughened and shatter-proof quality built-in lens enhances safety
 - IP66 rated against ingress of dust and moisture; IK08 rated against external impact
 - Wide input voltage range 140-270V and 4kV surge protection
 - Long life of 50,000 hrs. @L70B50 compared to MH/ SON
 - Pressure die-cast LM6 alloy housing offers excellent corrosion-resistance and robustness
- **Uniform lighting:**
 - Street light distribution optics for uniform lighting on the street
 - Compact form factor makes it smaller and lighter than conventional
- **Superior Aesthetics:** Finless design provides superior aesthetic looks

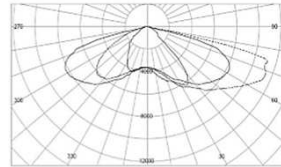
Key Differentiators

Unique road optics

- **Unique Road optics** option for better uniformity
- **Polycarbonate cover** for higher IK protections



SLC



SLA

Best in class LED's and Driver

- **Constant light** over wide voltage range
- **Potted driver** to protect against Moisture



High Ingress Protection and Installer Friendly

- **Screw** arrangement enable Higher Ingress Protections



Philips Xitanium® driver

- 4KV internal surge protection
- High Voltage cutoff & auto restart @320V+-15V
- Phase to phase 440V protection for 8 hours



High-quality Pressure die-cast aluminum housing LM6 alloy (Excellent corrosion resistance and robustness)



Polycarbonate cover comes with IK08 protection

FINLESS Design for higher aesthetics (NO EXTRENAL FINS) design for excellent heat dissipation

- High-efficiency LED module with CRI 70
- Dedicated optics for different Roads SLA & SLC

Applications

- Residential
 - Pedestrian/ Cycling path
 - Minor Road
- Parking area
- Periphery road
- Main road



Specifications

Description	BRP062	
System Lumen	6600lm	8350lm
Wattage	60W	70W
Luminous efficacy	110 lm/W	~120lm/W
CCT	5700K	
CRI	70	
Life (L70B50)	50,000 hrs @ T _a 35°C	
Ambient Temperature	0-35°C	
IP rating	66	
IK rating	08	
Power Factor	>0.95	
Operating Voltage Range	120-270V	
High Voltage Cutoff	325 (±15V)	
Phase to Phase Protection	440V (8 hrs.)	
Auto Restart	Yes	
Electrical protection class	Class 1	
Surge protection	4kV (inbuilt)	
10kV SPD	Optional	
Serviceability	Class B (driver replaceable)	
Dimensions (LxWxH)	473 x 165 x 80 mm	
Housing	Pressure Die Cast Aluminum (LM6 alloy)	
Color	Dark Grey	

Note : All are nominal values at Nominal operating voltage 220 -240V and will vary +/-10%

Ordering Data

12 NC	Description	Spare Driver 12 NC
919515812910	BRP062 LED 65 CW SLA S1 PSU	919415811029
919515812823	BRP062 LED 68 CW SLC S1 PSU	919415811029
919515812913	BRP062 LED 82 CW SLA S1 PSU	929001478306
919515812824	BRP062 LED 84 CW SLC S1 PSU	929001478306