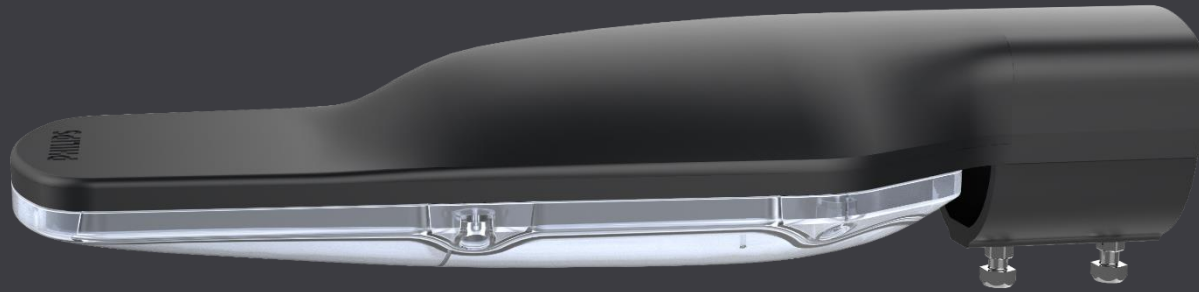




SmartBright Street

Reliable Savings, lasting brightness



Puneet Kalia & Nitin Bahl

Product Management -Outdoor

Contents

- Transforming Needs in Lighting & Trends
- Product Features and Benefits
- Product Applications
- Product Image
- Product Specification
- Product Designation
- Product Dimension
- Product Ordering Information

Lighting needs are transforming

I want to feel safe and comfortable



Urbanization

We are increasingly urban and global. Today, 50% of the world's population lives in cities. This is expected to rise to 70% by 2050, presenting new challenges



The people's city

Better experiences and better lives

I need to think about the future



Resourcefulness & Economic uncertainty

Surging demand for raw materials/energy means prices and availability are a concern. Impact on the environment too. Tighter budgets are encouraging cities to outsource operations more and more too



Sustainability

Doing more to help people use less

I want to inspire



Branding

The public's enhanced sense of personal identity is today matched by their cities. Inter-city competition aimed at attracting people, tourists and businesses is growing



Urban development, Iconic landmarks

Enhanced experiences, in and around landmarks, and regeneration of old districts

I want to be in control



Connectivity

There are huge new opportunities to improve urban life through connected intelligence, using highly efficient solutions enabled by ICT



Connected city

Intelligent and connected city infrastructure to improve mobility and community life

Trends in Road Lighting

An increasing level of social and environmental responsibility

- Stronger interest in 'Energy Saving Solutions'
- Need for recyclable 'green products'
- Govt. recyclable subsidies & legislation at municipal level for energy saving & CO2 reduction

Improving 'quality of life' and 'well being' considerations

- Enhanced comfort, safety and security
- Not just light on the road but better uniformity and aesthetic lighting solutions
- Feeling of civic pride, belonging

Rapid urbanization; Economic expansion; GDP Growth; Increasing Wealth

- More roads as a result of rapid infrastructure development
- Upgrading city centers, residential areas, parks & squares

Introducing ... Smart Bright



*“Maximize energy savings,
Simple & Economical”*

 **signify**

SmartBright Street (BRP056)

Finless Design



Applications



Residential lighting and building apartments



5500lm

PHILIPS

Street Light

SmartBright Street

Reliable Savings, lasting brightness

High performance in a robust and compact design

Unique Selling Points:

- Up-to 70% energy saving
- Polycarbonate cover with high impact resistance
- Robust PDC housing LM6 alloy with IP66 protection
- Long life of as compared to MH/SON streetlights
- System power consumption / Light output 50W/5500lm
- 1 to 1 replacement for 1x150W SON streetlights

Integrated
optics

Uniform
lighting on
street

140 – 270V
supply range

Wide
operating
voltage

Finless
design

Superior
aesthetic
looks

Features and Benefits

Use with peace of mind

- 4KV Surge Protection
- 10KV Surge Protection(Optional)
- Impact Resistance of IK08 classification
- IP66 certified

Long-lasting performance

- Designed for energy savings of up to 70% compared with conventional lighting
- L70 50k hours*
- Designed for operations under diverse environment from -10°C to 45°C

**Designed to sustain 70% of initial lumen output (L70) at 50,000 hours of lifetime*

High-quality materials and design

- Finless design with superior aesthetic looks
- Toughened and shatter-proof quality integrated built-in lens enhances to safety
- Pressure die-cast housing offers excellent corrosion-resistance and robustness

Uniform lighting

- Dedicated Street light distribution with uniform lighting on the street



Reliable Savings, lasting brightness

High performance in a robust and compact design

Highlights of the light Finless design

Energy saving up to 60%

- System efficacy 110 lumens per watt
- 1 to 1 replacement for retrofit SON 150W Street Light

Comfort light experience

- Polycarbonate Cover with Integrated optics with good uniformity
- No direct LED dots (Lens plate use for glare protection)
- Accurate light, CRI :70
- Uniform Glare free Lighting Experience

Long-lasting performance

- Robust aluminum die-casting housing
- Finless aluminum PDC (LM6 Alloy)housing offers excellent thermal dispersion to assure the long life time
- L70B50 50k hours @ Ta35°C
- Designed for operations under diverse environment from -10°C to 35°C

Usage flexibility

- Suits for Pole Dial Mounting up to 60mm
- Dedicated Integrated optics for different Roads-
- Compact form factor that makes this smaller and lighter than conventional luminaires, easy to handle



Safe and Reliable performance

Philips Xitanium® driver

- 4KV internal surge protection
- High Voltage cutoff & auto restart @320V+-15V
- Phase to phase 440V protection for 8 hours



High-quality Pressure die-cast aluminum housing LM6 alloy (Excellent corrosion resistance and robustness)



Polycarbonate cover comes with IK08 protection

FINLESS Design for higher aesthetics (NO EXTRENAL FINS) design for excellent heat dissipation

- High-efficiency LED module with CRI 70
- Integrated optics for different Roads

High-performance LED module, high-quality LED driver, professional mechanical structure assure the safety and reliability

Application Areas

Parking area



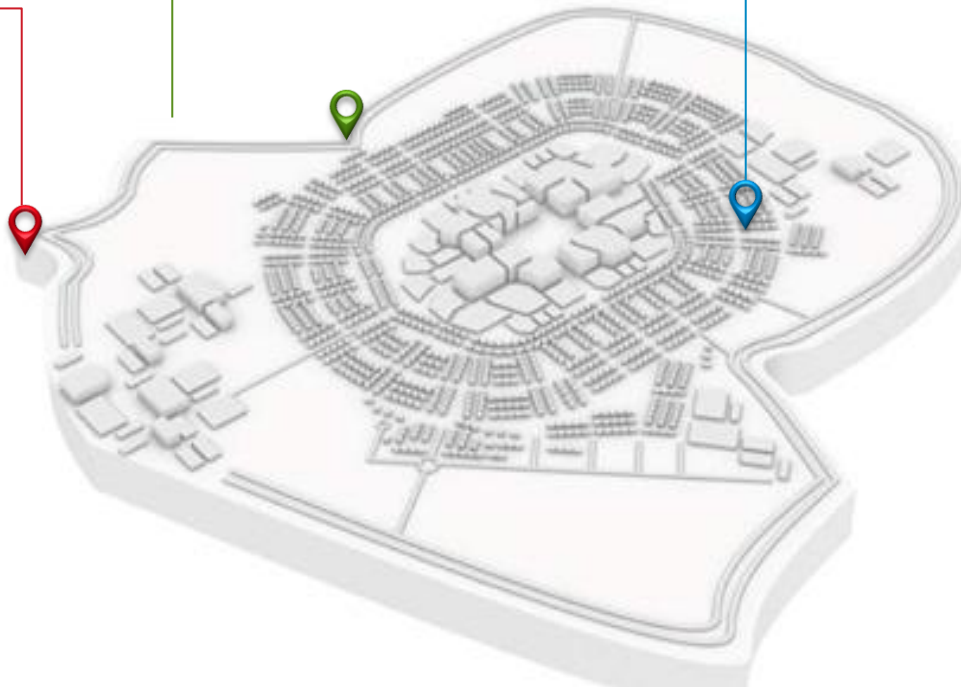
Periphery Roads

- Main road
- Highways road
- Minor road



Residential

- Walking/cycling path
- Minor road



Key Differentiators

Unique
road optics

- Unique Road optics option for better uniformity
- Polycarbonate cover for higher IK protections

Best in class
LED's and
Driver

- Constant light over wide voltage range
- Potted driver to protect against Moisture



High Ingress
Protection
and Installer
Friendly

- Screw arrangement enable Higher Ingress Protections



Compliance

✓ IS 10322 / IEC60598
(Part 5/sec 1) -1985

✓ Class I

✓ IP 66

✓ IS 15885 / IEC61347
(Part 2/sec 13) -1985

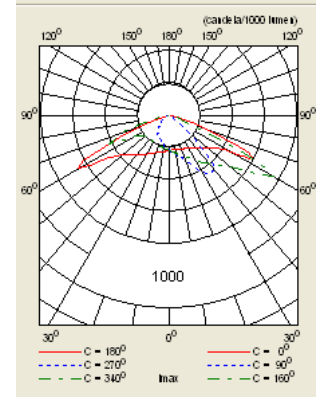
✓ CISPR15_(9Khz-30mHz)



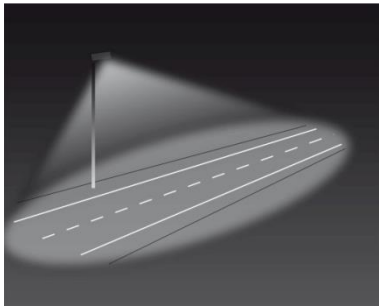
Dedicated optics

Optimized Road Lighting Performance

Unique peanut optic design guarantees light uniformity for today and in future.



Multi-layer Distribution with Peanut optics



1. Maximized Energy Savings

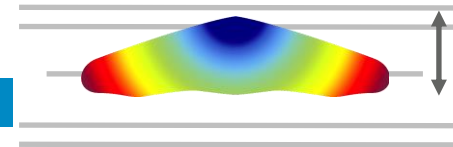
- Optimized Road Lighting Performance

Selection of unique dedicated optical lens with flexible lumen packages to suit different applications.

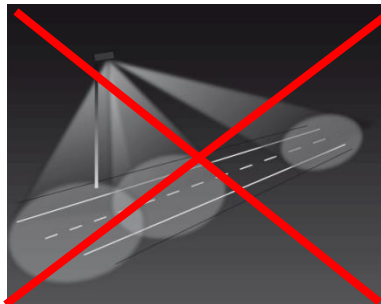
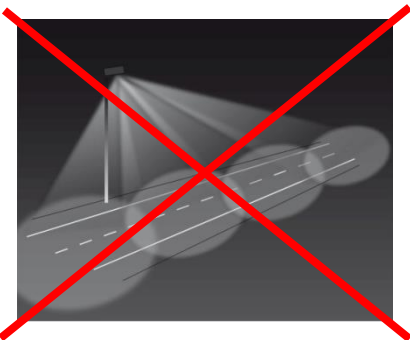
- More Light on the Road

Superior watts per square meter (W/m²) performance – Using less energy to light per m² on the road.

Philips Smart Bright out-performs other Road Lightings



Multiple spot with modules based LED street light



Typical competition
distribution with modules

Ordering Information

12NC	12NC Global Product description	Spare Driver 12 NC
919515813521	BRP056 LED55 CW SLF S1 PSU GR SPD	
919515813886	BRP056 LED55 CW SLF S1 PSU GR	

Beauty Shots



Specification Sheet

Model name	BRP056
System Power	50W
System Lumen output	5500lm CW
CCT/ CRI	5700K/ 70
System Efficacy	110lm/w
Insulation classification	Class I
Surge	4KV (Inbuilt)
Volt/Frequency	120 - 270V/ 50Hz
Power factor	>0.95
IP rating/ IK rating	IP66 / IK 08
Surge protection	4KV Inbuilt
Lifetime	50,000 hrs @Ta 35°C
Ambient Temp	0 - 35°C
Serviceability	Class B
Casing colour/ Certificate	Dark Grey/ IS10322
Service	Class B Driver replacement
Protection	440V for 8 Hrs (P2P)
High Cut	325V (+-15V)
Auto Restart	YES
10KV SPD	Optional
Optics	Integrated

Caution : Earthing terminal to be connected

Installation

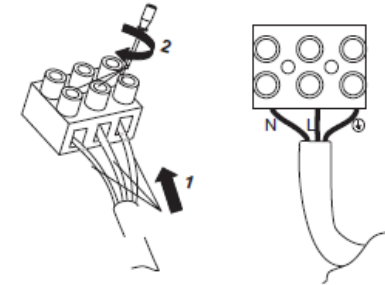
1. Connect the red wire to live, Black wire to Neutral and the Green-yellow wire to ground. After joining Properly insulate the wires using good quality Electrical insulation tape.

CAUTION

1. Ensure Earthing is connected.
2. Ensure 3 core CABLE for Connections(diameter8-10mm)
3. Cable Entry gland should be properly tightened.
4. Product should be operated between 100-300V a.c.
5. Use Surge protection (upto 10kV) to protect against surges
Use Type B+C surge type SPD in distribution box to arrest switching and lighting surges.

FAILURE OF PRODUCT DUE TO NON COMPLIANCE TO ANY OF THE ABOVE,
VOIDS WARRANTY OF PRODUCT

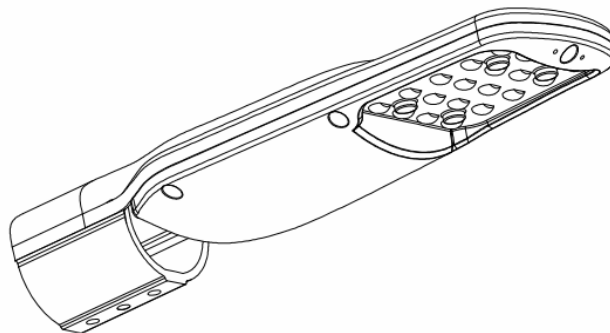
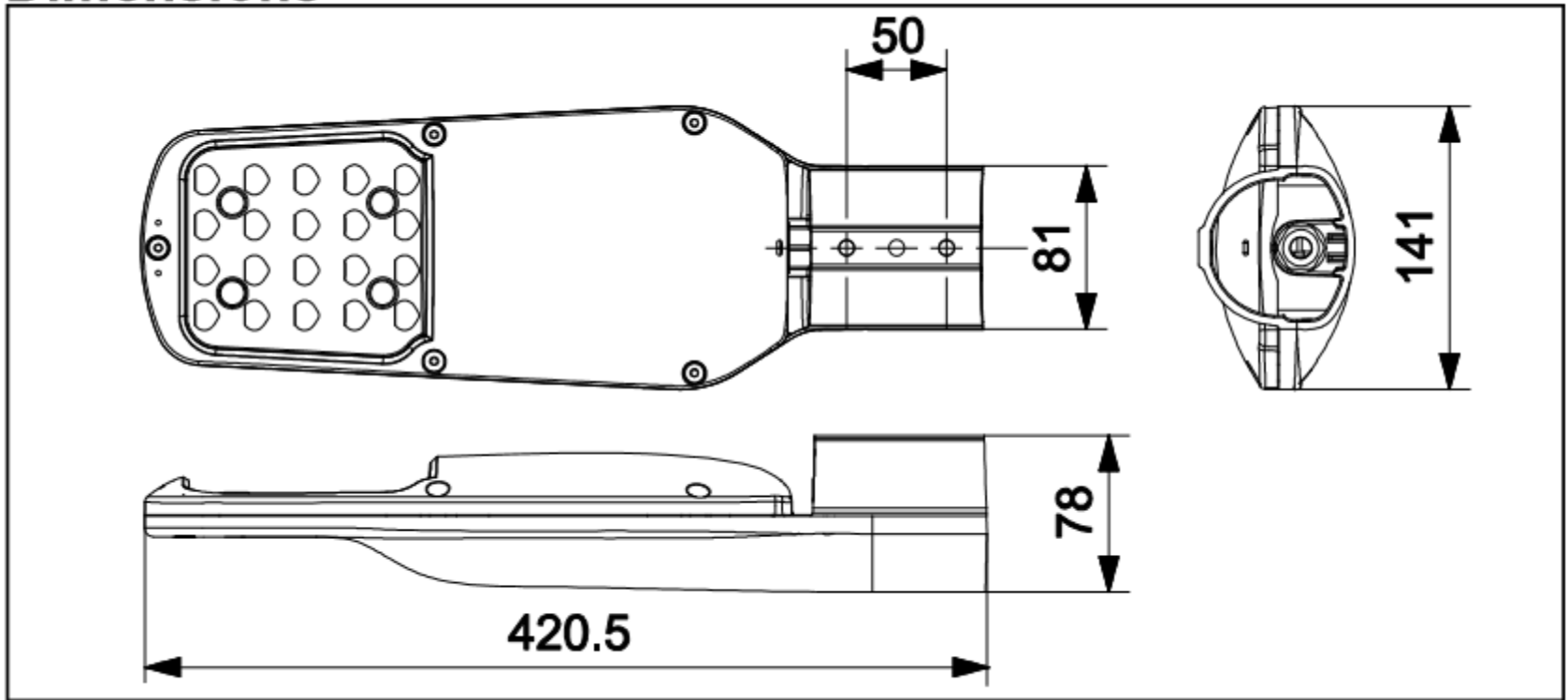
- 6 Make the electrical connections in 3 pole connectors as per the L-N-E marking.



- Earthing is a must for all LED based product
- Ensure Surge protector are installed in the supply panel
- Ensure LED products are in a separate circuit and not connected with other heavy duty loads
- The warranty will be void if earthing is not provided as per applicable standards

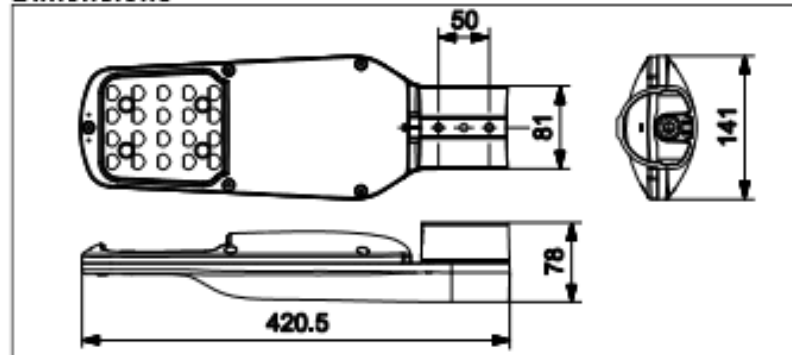
Dimensions

Dimensions



Mounting Instructions

Dimensions



Installation

1. Connect the red wire to live, Black wire to Neutral and the Green-yellow wire to ground. After joining Properly insulate the wires using good quality Electrical insulation tape.
2. Unfasten the Check nuts and loosen the M8 hex bolts to the required height as per the pole size. (Fig 1)
3. Insert the pole up to the position shown in the drawing below (Fig 2)
4. Tighten both the M8 hex bolts with tightening torque of 8Nm and then tighten the Check nuts fully (Fig 3).

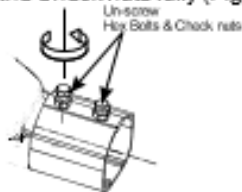


FIG.1



FIG.2

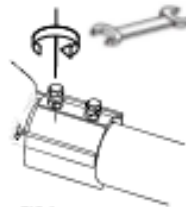


FIG.3

CAUTION

1. Ensure Earthing is connected.
2. Ensure 3 core CABLE for Connections (diameter 5-7mm)
3. Cable Entry gland should be properly tightened.
4. Product should be operated between 100-300V a.c.
5. Use Surge protection (upto 10kV) to protect against surges
Use Type B+C surge type SPD in distribution box to arrest switching and lighting surges.

FAILURE OF PRODUCT DUE TO NON COMPLIANCE TO ANY OF THE ABOVE,
VOIDS WARRANTY OF PRODUCT

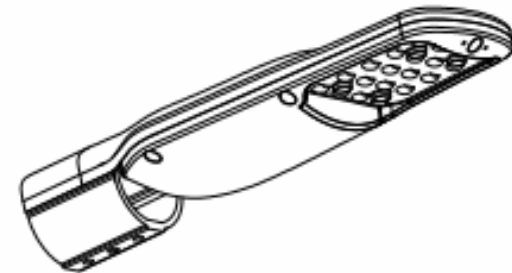
Signify Innovations India Limited

Signify
Innovations

Installation Instruction

BRP 056

Street Lighting Luminaire



Type	:	BRP056
Light Source	:	LED's
Voltage	:	240 V, 50 Hz
IP Classification	:	IP-66
Net Weight	:	1.5 kg approx
Max. Projected Area	:	.06 m ²
Application	:	Outdoor use only
Mounting position	:	Horizontal
Application height	:	Upto 8m
Pole Outer Diameter	:	48-60mm

PHILIPS

©ignify