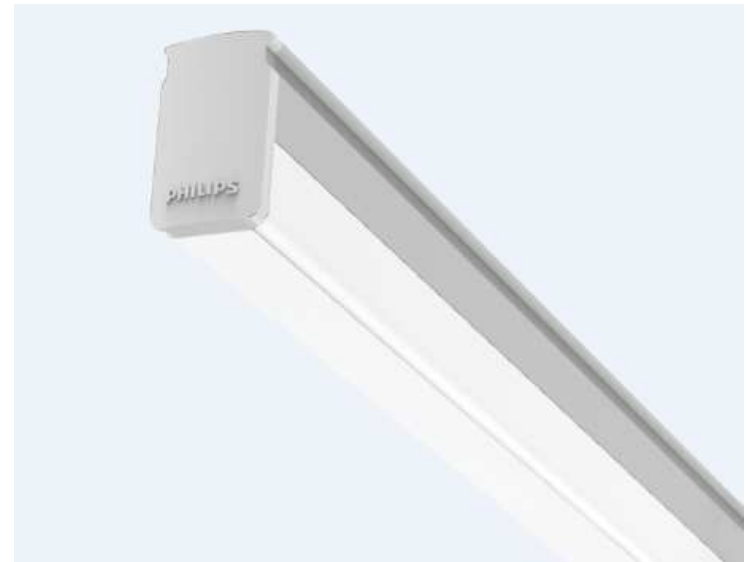


PHILIPS

sense **and** simplicity

Smart Bright *Extra* batten

LESS POWER MORE LIGHT



Sisesh Behuray & Nitin Bahl
Jan 2017

PHILIPS

Introducing the new Smart Brite EXTRA

LESS IS MORE



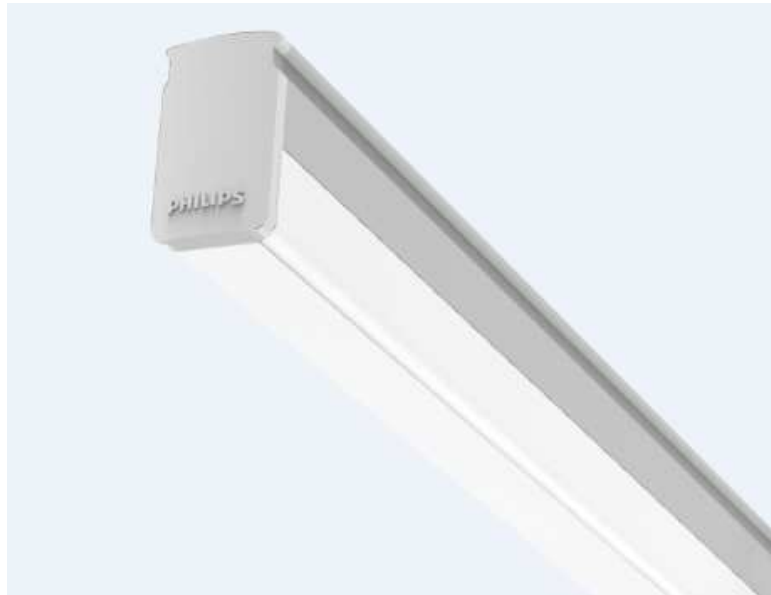
LESS power consumption.... **MORE** light output.....

PHILIPS

Smart Bright *Extra* Batten

LESS POWER CONSUMPTION MORE LIGHT

> 60%
energy
saving



Product Highlights

- High performance LED batten equivalent to a 2x36/40W* standard conventional fluorescent batten.
- System efficacy >110 lm/W, up to 60% energy saving with same lighting level.
- Slim Integrated design, easy to install.
- Good color uniformity and color rendering (CRI>80).
- Reliable and robust housing structure, maximize the endurance over the life time.
- Suitable for ceiling, wall and suspension mounting(conduit).

PHILIPS

Features and Benefits

Reliable Savings, lasting brightness

High performance in a robust and compact design

Less POWER more LIGHT

- Suitable for Surface mounted / Suspension
- 2500 Lumen @ 22 W
- Efficacy : >110 Lm/W
- CRI >80
- Point to point replacement for 2x36/40W* Standard fluorescent lamp T12 Lamp
- PF : >.9
- THD : <20 %



Long-lasting performance

- Designed for energy savings of up to 60% compared with conventional lighting
- L70B50 25k hours*
- **Designed to sustain 70% of initial lumen output (L70) at 25,000 hours of lifetime*

High-quality materials and design

- Extruded aluminum housing enhances safety
- High quality PC Diffuser

Wide selection

- Choice of color temperature – Cool white (6500K), Neutral (4000K)

PHILIPS

Applications

1. Small Retail Outlets
2. Institutions & Classrooms
3. In shop lighting
4. Staircase
5. Hostels , Schools & Colleges
6. Small offices
7. Community Centers/ Clubs
8. Small Warehouses



LED Replacement for 2x36W/ 2x40W TLD batten with Standard lamps

Standard twin 36W* batten vs BN 021

> 60%
energy
saving

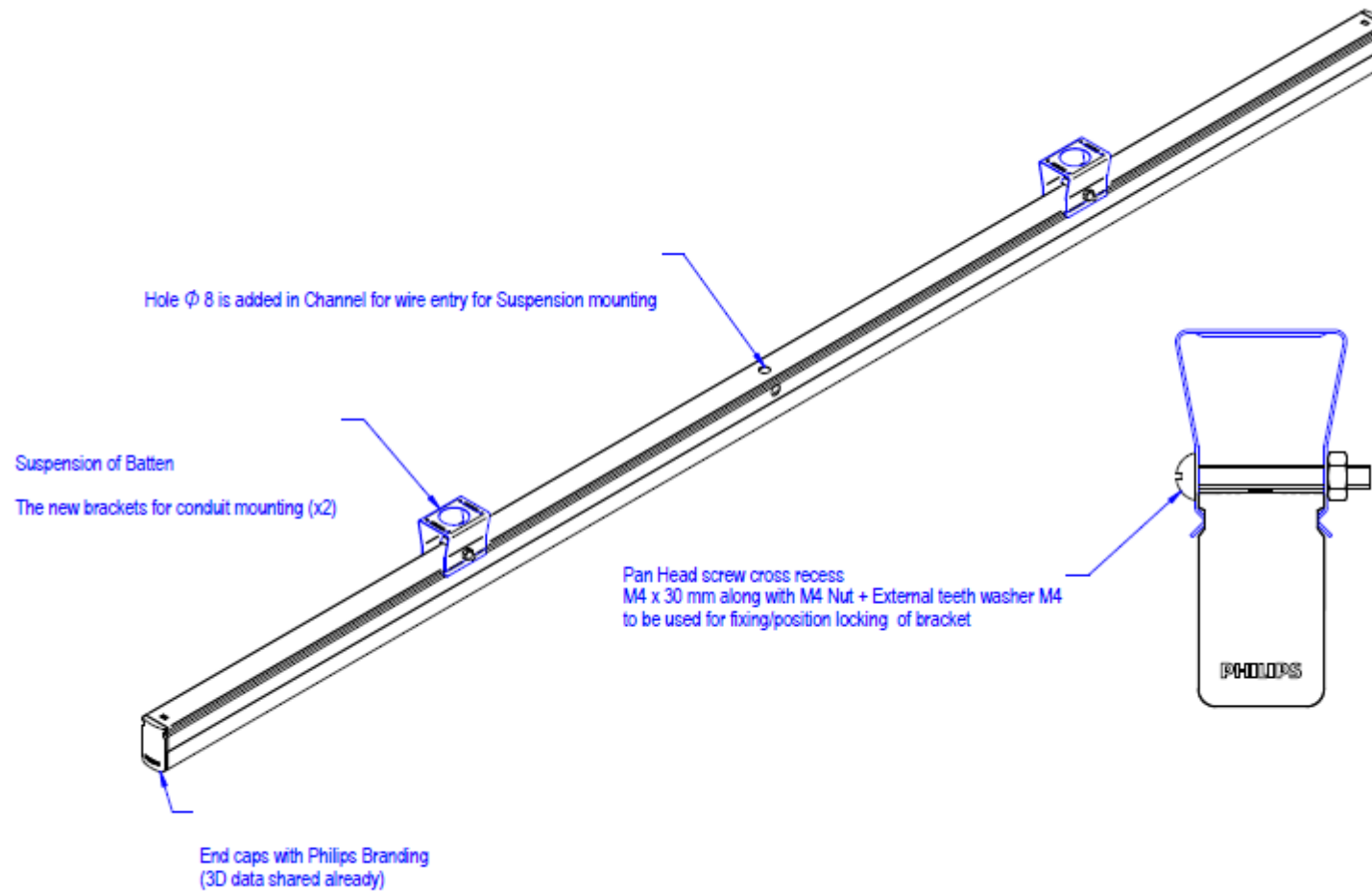
Standard twin 40W* batten vs BN 021

Parameter	2 x 36W Batten	Smart Brite EXTRA	Parameter	2 x 40W Batten	BN 021
Lamp	Standard 36W	LED 6500K	Lamp	Standard 40W	LED 65000
Lamp Lumen	4800	2500	Lamp Lumen	4800	2500
Downward LOR (DLOR)	60%	100%	Downward LOR (DLOR)	60%	100%
Effective Lumens	2880	2500	Effective Lumens	2880	2500
System Wattage	75	22	System Wattage	82	22
Savings		> 60%	Savings		> 60%

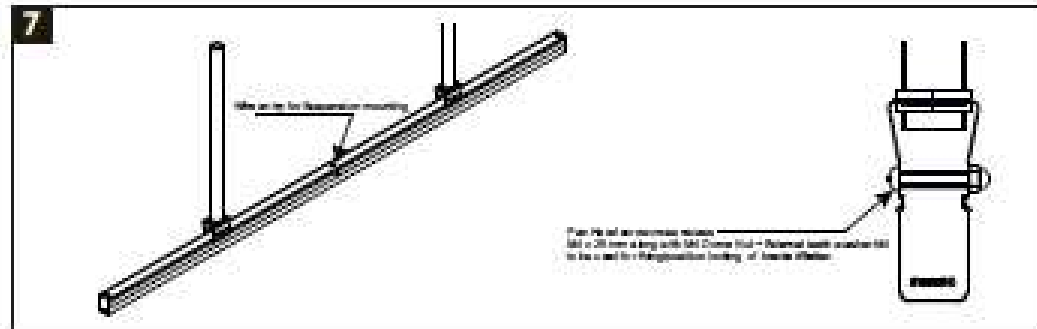
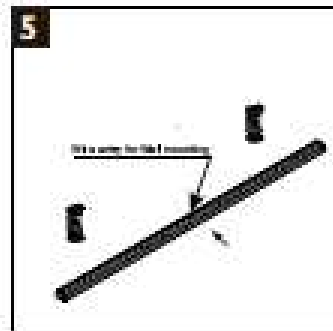
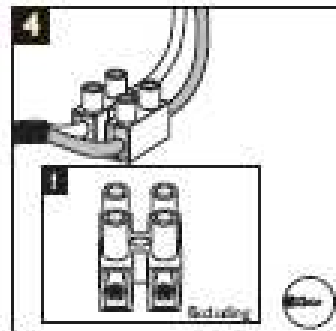
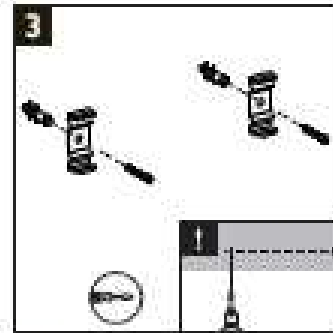
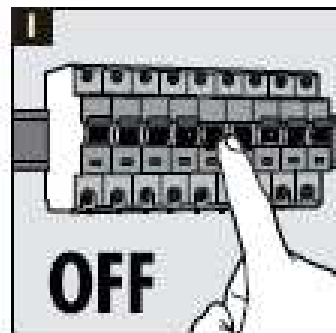
PHILIPS

Parameter	Smart Brite EXTRA batten
lumen output	2500 Lm
system wattage	22 W
efficacy	>110
CCT	4000K / 6500K
CRI	>80
Mounting	Wall/Surface/Suspension
Housing	Aluminum Extrusion
IP	IP 20
Control	Not Applicable
Luminaire compliance	Relevant LED IS standards
Life	L70B50 25k
Operating temperature	Upto 45 deg C
T ambient (Max)	45 deg C
PF	> 0.9
THD	< 20 %
Input voltage range	140V - 270V AC
SDCM	< 7
diffuser	PC
Dimensions	1185mm X 22mm X 36mm
Serviceability	Class C – Non Replaceable Driver

Conduit Mounting for Institutions & offices



PHILIPS MI Sheet



All dimensions are in mm

220V
240V



IP20



to
45°



Ordering Data

12 NC	Product Description	Qty. per Box
919515811771	BN 021 LED25S 6500 PSU GR S1	20
919515811874	BN 021 LED25S 4000 PSU GR S1	20

Packaging

